



# JOANNE / J.F. FABRICS

## PRODUCT INFORMATION

### Coliseum - J3701

# Coliseum

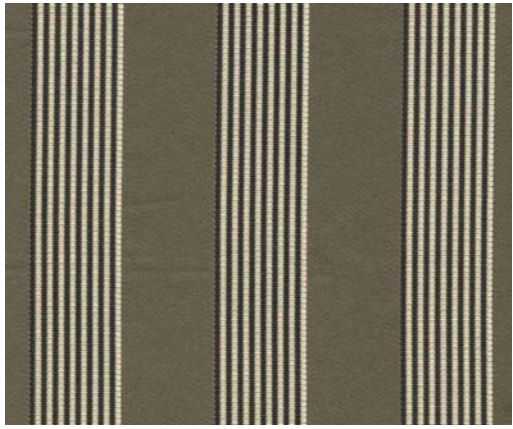


Coliseum is an exquisite collection of incredible luster & high sheen designs that will surely entice and delight you with its charismatic grandeur. Coliseum's beautifully grouped assortment of 7 novelty patterns consisting of roman columns, diamonds, stripes, picture box diamonds with zebras, African animals, small leaves, and monkeys are sure to meet the most demanding tastes.

Coliseum's patterns come in an array of 45 skus that pass an abrasion of 30,000 DR Wyzenbeek Cotton Duck, run up the roll, and can be used for upholstery, drapery, bedding and decorative accessories.

Note that all patterns are protected with a Teflon® coating for extra value and all patterns are exclusive to Joanne/J.F. Fabrics.





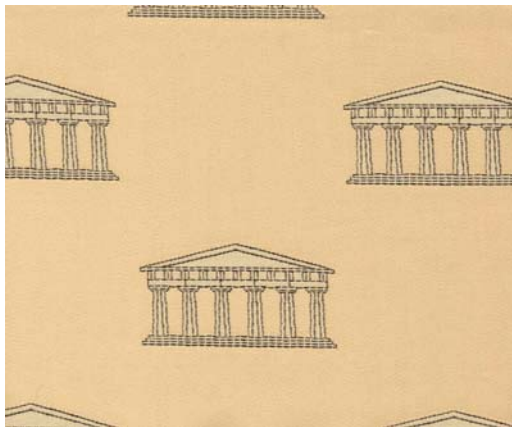
**PATTERN**  
 Number of Cols.  
 Content  
 Country of Origin  
 Width  
 Vertical  
 Horizontal  
 Railroaded  
 Weight (oz/ln yd)  
 Finish  
 Care Code  
 Flammability  
 Surface Abrasion  
 Tear Strength  
 Tensile Strength  
 Colorfastness to Water  
 Colorfastness to Solvent  
 Colorfastness to Light  
 Crocking

**CHARIOT**  
 9  
 55% Cotton, 45% Viscose  
 Belgium  
 54" - 137 cm  
 N/A  
 2.75" (7 cm)  
 No  
 13  
**Teflon**  
 S  
 UFAC Class/e 1, Cal. 117  
 30,000 DR Wyzenbeek Cotton Duck  
 Warp: 13.7 lbf, Filling: 11.5 lbf  
 Warp: 215 lbf, Filling: 176 lbf  
 Shade Change: Class/e 4.5  
 Shade Change: Class/e 4.5, Staining: Class/e 5  
 Class/e 4  
 Wet: Class/e 5, Dry: Class/e 5



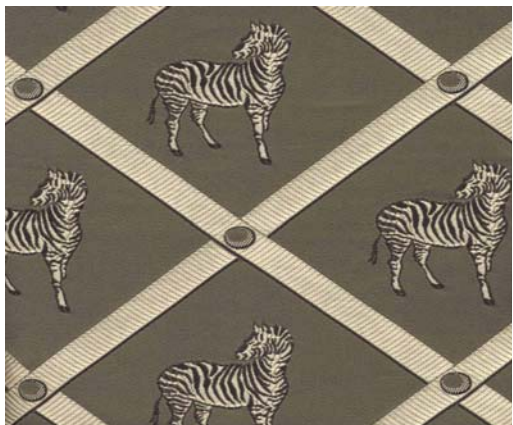
**PATTERN**  
 Number of Cols.  
 Content  
 Country of Origin  
 Width  
 Vertical  
 Horizontal  
 Railroaded  
 Weight (oz/ln yd)  
 Finish  
 Care Code  
 Flammability  
 Surface Abrasion  
 Tear Strength  
 Tensile Strength  
 Colorfastness to Water  
 Colorfastness to Solvent  
 Colorfastness to Light  
 Crocking

**EMPEROR**  
 6  
 55% Cotton, 45% Viscose  
 Belgium  
 54" - 137 cm  
 3.425" (8.7 cm)  
 3.425" (8.7 cm)  
 No  
 13  
**Teflon**  
 S  
 UFAC Class/e 1, Cal. 117  
 30,000 DR Wyzenbeek Cotton Duck  
 Warp: 13.7 lbf, Filling: 11.5 lbf  
 Warp: 215 lbf, Filling: 176 lbf  
 Shade Change: Class/e 4.5  
 Shade Change: Class/e 4.5, Staining: Class/e 5  
 Class/e 4  
 Wet: Class/e 4, Dry: Class/e 5



**PATTERN**  
 Number of Cols.  
 Content  
 Country of Origin  
 Width  
 Vertical  
 Horizontal  
 Railroaded  
 Weight (oz/ln yd)  
 Finish  
 Care Code  
 Flammability  
 Surface Abrasion  
 Tear Strength  
 Tensile Strength  
 Colorfastness to Water  
 Colorfastness to Solvent  
 Colorfastness to Light  
 Crocking

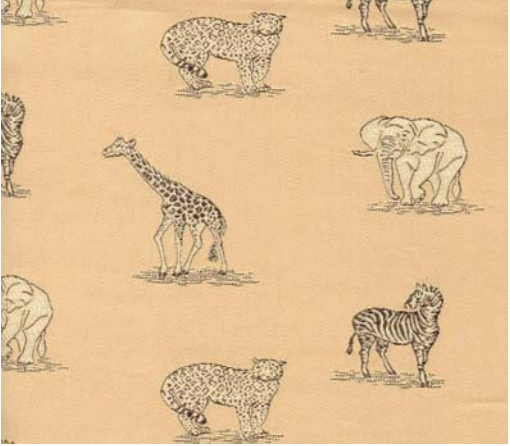




**GLADIATOR**  
 5  
 55% Cotton, 45% Viscose  
 Belgium  
 54" - 137 cm  
 6.75" (17.2 cm)  
 6.875" (17.5 cm)  
 No  
 13  
**Teflon**  
 S  
 UFAC Class/e 1, Cal. 117  
 30,000 DR Wyzenbeek Cotton Duck  
 Warp: 13.7 lbf, Filling: 11.5 lbf  
 Warp: 215 lbf, Filling: 176 lbf  
 Shade Change: Class/e 4.5  
 Shade Change: Class/e 4.5, Staining: Class/e 5  
 Class/e 4  
 Wet: Class/e 4, Dry: Class/e 5



**PATTERN**  
 Number of Cols.  
 Content  
 Country of Origin  
 Width  
 Vertical  
 Horizontal  
 Railroaded  
 Weight (oz/ln yd)  
 Finish  
 Care Code  
 Flammability  
 Surface Abrasion  
 Tear Strength  
 Tensile Strength  
 Colorfastness to Water  
 Colorfastness to Solvent  
 Colorfastness to Light  
 Crocking

**HERCULES**  
 6  
 55% Cotton, 45% Viscose  
 Belgium  
 54" - 137 cm  
 6.75" (17.2 cm)  
 6.875" (17.5 cm)  
 No  
 13  
**Teflon**  
 S  
 UFAC Class/e 1, Cal. 117  
 30,000 DR Wyzenbeek Cotton Duck  
 Warp: 13.7 lbf, Filling: 11.5 lbf  
 Warp: 215 lbf, Filling: 176 lbf  
 Shade Change: Class/e 4.5  
 Shade Change: Class/e 4.5, Staining: Class/e 5  
 Class/e 4  
 Wet: Class/e 4, Dry: Class/e 5



	<p><b>PATTERN</b>  Number of Cols.  Content  Country of Origin  Width  Vertical  Horizontal  Railroaded  Weight (oz/ln yd)  Finish  Care Code  Flammability  Surface Abrasion  Tear Strength  Tensile Strength  Colorfastness to Water  Colorfastness to Solvent  Colorfastness to Light  Crocking</p>	<p><b>HEROS</b>  6  55% Cotton, 45% Viscose  Belgium  54" - 137 cm  7.25" (18.5 cm)  13.5" (34.5 cm)  No  13  <b>Teflon</b>  S  UFAC Class/e 1, Cal. 117  30,000 DR Wyzenbeek Cotton Duck  Warp: 13.7 lbf, Filling: 11.5 lbf  Warp: 215 lbf, Filling: 176 lbf  Shade Change: Class/e 4.5  Shade Change: Class/e 4.5, Staining: Class/e 5  Class/e 4  Wet: Class/e 4, Dry: Class/e 5</p> 
	<p><b>PATTERN</b>  Number of Cols.  Content  Country of Origin  Width  Vertical  Horizontal  Railroaded  Weight (oz/ln yd)  Finish  Care Code  Flammability  Surface Abrasion  Tear Strength  Tensile Strength  Colorfastness to Water  Colorfastness to Solvent  Colorfastness to Light  Crocking</p>	<p><b>MILO</b>  8  55% Cotton, 45% Viscose  Belgium  54" - 137 cm  6.875" (17.5 cm)  13.5" (34.5 cm)  No  13  <b>Teflon</b>  S  UFAC Class/e 1, Cal. 117  30,000 DR Wyzenbeek Cotton Duck  Warp: 13.7 lbf, Filling: 11.5 lbf  Warp: 215 lbf, Filling: 176 lbf  Shade Change: Class/e 4.5  Shade Change: Class/e 4.5, Staining: Class/e 5  Class/e 4  Wet: Class/e 4, Dry: Class/e 5</p> 
	<p><b>PATTERN</b>  Number of Cols.  Content  Country of Origin  Width  Vertical  Horizontal  Railroaded  Weight (oz/ln yd)  Finish  Care Code  Flammability  Surface Abrasion  Tear Strength  Tensile Strength  Colorfastness to Water  Colorfastness to Solvent  Colorfastness to Light  Crocking</p>	<p><b>MYTHOLOGY</b>  5  55% Cotton, 45% Viscose  Belgium  54" - 137 cm  3.425" (8.7 cm)  2.75" (7 cm)  No  13  <b>Teflon</b>  S  UFAC Class/e 1, Cal. 117  30,000 DR Wyzenbeek Cotton Duck  Warp: 13.7 lbf, Filling: 11.5 lbf  Warp: 215 lbf, Filling: 176 lbf  Shade Change: Class/e 4.5  Shade Change: Class/e 4.5, Staining: Class/e 5  Class/e 4  Wet: Class/e 4, Dry: Class/e 5</p> 