



# JOANNE / J.F. FABRICS

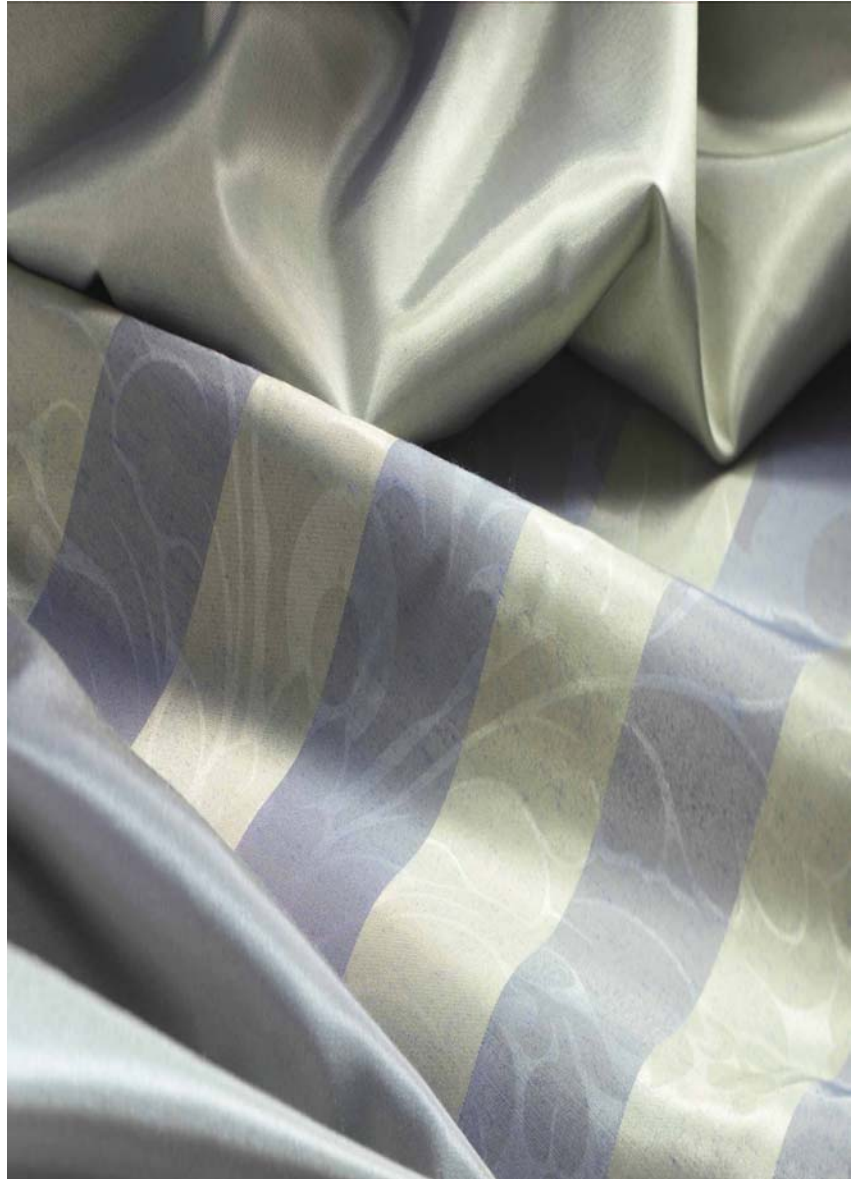
## PRODUCT INFORMATION

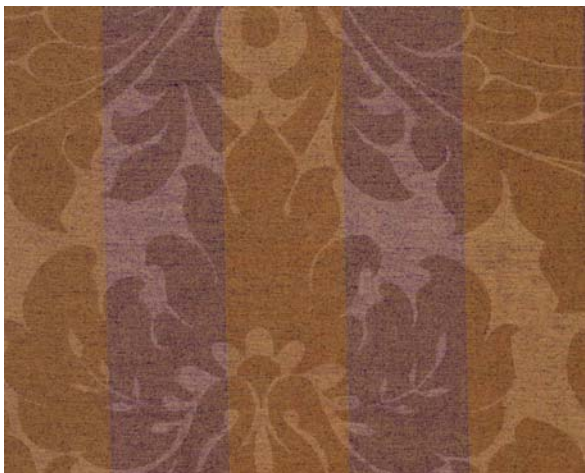

### Encounters - J3691

---

## *Encounters*

*Encounters* is a refined collection of iridescent taffetas. *Juliet* is a two-toned stripe with an acanthus leaf print overlay and *Romeo* is a two-sided (reversible) plain beauty that lends itself perfectly to a multitude of applications. *Romeo & Juliet* are 54" wide, run up the roll, and for a soft luscious fabric they are unbelievably strong for abrasion, passing over 102,000 DR Wyzenbeek Cotton Duck. Rich saturated shades of Garnet, Sapphire, and Venture delicately meld into cool sultry neutrals creating an air of elegance and drama.



	<p><b>PATTERN</b></p> <p>Number of Cols. Content Country of Origin Width Vertical Horizontal Railroaded Weight (oz/ln yd) Finish Care Code Flammability Surface Abrasion Tear Strength Seam Slippage Breaking Strength Colorfastness to Water Colorfastness to Solvent Colorfastness to Light Crocking Pilling</p>	<p><b>JULIET</b></p> <p>13 56% Polyester, 44% Viscose Belgium 54" - 137 cm 25" (63.5 cm) 18" (46 cm) No 5.3 N/A W (Washable) - P (Dry Clean) UFAC Class/e 1, Cal. 117, NFPA 260 105,000 DR Wyzenbeek Cotton Duck Warp: 7.8 lbf, Filling: 3.62 lbf Warp: 34.64 lbf, Filling: 33.02 lbf Warp: 135 lbf, Filling: 51 lbf Shade Change: Class/e 5 N/A Class/e 6 Wet: Class/e 3, Dry: Class/e 5 Class/e 5</p>
	<p><b>PATTERN</b></p> <p>Number of Cols. Content Country of Origin Width Vertical Horizontal Railroaded Weight (oz/ln yd) Finish Care Code Flammability Surface Abrasion Tear Strength Seam Slippage Breaking Strength Colorfastness to Water Colorfastness to Solvent Colorfastness to Light Crocking Pilling</p>	<p><b>ROMEO</b></p> <p>29 56% Polyester, 44% Viscose Belgium 54" - 137 cm N/A N/A No 5.3 N/A W (Washable) - P (Dry Clean) UFAC Class/e 1, Cal. 117, NFPA 260 102,000 DR Wyzenbeek Cotton Duck Warp: 8.83 lbf, Filling: 4.12 lbf Warp: 38.76 lbf, Filling: 34.49 lbf Warp: 123 lbf, Filling: 52 lbf Shade Change: Class/e 5 Shade Change: Class/e 5 Class/e 5 Wet: Class/e 4, Dry: Class/e 5 Class/e 5</p>