



# JOANNE / J.F. FABRICS

## PRODUCT INFORMATION

### Cosmo - J3831

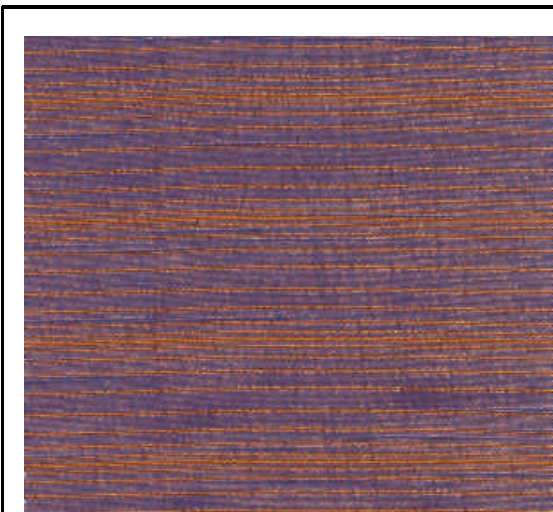


# Cosmo

Presenting Cosmo, a silky iridescent horizontal striped fabric constructed of Viscose, Polyester, and Elastomer. Elastomer is a flexible fiber that allows the fabric to stretch, enhancing its texture and strength. Cosmo has amazing drape-ability and is durable enough to use for upholstery passing 51,000 double rubs Wyzenbeek. The colorations in this collection are charismatic and sophisticated.

Cosmo is exclusive to Joanne Fabrics / J.F. Fabrics.

#### PATTERN COSMO



Number of Cols.	22
Content	53% Viscose, 45% Polyester, 2% Elastomer
Country of Origin	Belgium
Width	54" - 137 cm
Vertical	N/A
Horizontal	N/A
Railroaded	No
Weight (oz/ln yd)	7
Care Code	W (Washable) - P (Dry Clean)
Flammability	UFAC Class/e 1, Cal. 117 & NFPA 260
Surface Abrasion	51,000 DR Wyzenbeek Cotton Duck
Seam Slippage	Warp: 35.86 lbf, Filling: 46.07 lbf
Tear Strength	Warp: 10.27 lbf, Filling: 13.67 lbf
Breaking Strength	Warp: 99 lbf, Filling: 55 lbf
Colorfastness to Water	Shade Change Class/e 5
Colorfastness to Light	Class/e 5
Crocking	Wet: Class/e 4 - Dry: Class/e 5
Pilling	Class/e 4