



JOANNE / J.F. FABRICS

PRODUCT INFORMATION

Magical Sheers - J3851

Magical Sheers



Subtle gradations of shade and density are celebrated in our Magical Sheers collection.

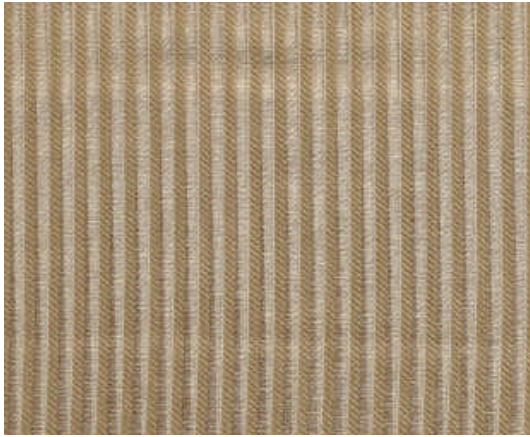
Patterns ranging from vertical stripes in varying widths to opulent opaque sheers, convey feelings of romance and sophistication.

This comprehensive assortment of shimmering wide-width, fire retardant sheers are timeless and elegant and will make the most magnificent impression. All patterns pass NFPA 701 and are exclusive to Joanne / J.F. Fabrics.



Magical Sheers

PATTERN CHARM



Number of Cols. 4
Content 100% Polyester
Country of Origin Belgium
Width 124" - 315 cm
Vertical N/A
Horizontal N/A
Railroaded Yes
Weight (oz/in yd) 3.54
Care Code W (Washable) - P (Dry Clean)
Flammability **NFPA 701 & Cal. 117**
Colorfastness to Water Shade Change Class/e 5
Colorfastness to Light Class/e 6
Crocking Wet: Class/e & Dry: Class/e 5



PATTERN LOVELY



Number of Cols. 7
Content 100% Polyester
Country of Origin Belgium
Width 124" - 315 cm
Vertical N/A
Horizontal N/A
Railroaded Yes
Weight (oz/in yd) 1.99
Care Code W (Washable) - P (Dry Clean)
Flammability **NFPA 701 & Cal. 117**
Colorfastness to Water Shade Change Class/e 5
Colorfastness to Light Class/e 6
Crocking Wet: Class/e & Dry: Class/e 5



PATTERN MARS

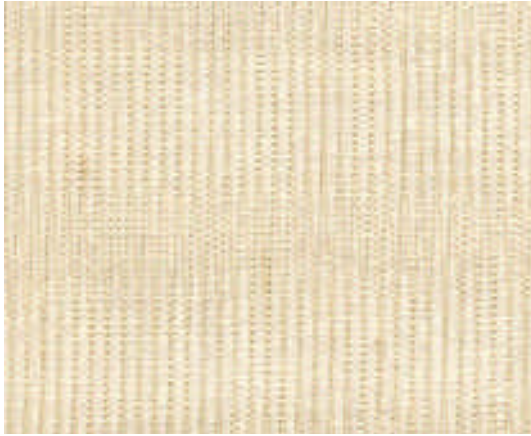


Number of Cols. 4
Content 100% Polyester
Country of Origin Belgium
Width 124" - 315 cm
Vertical N/A
Horizontal N/A
Railroaded Yes
Weight (oz/in yd) 2.57
Care Code W (Washable) - P (Dry Clean)
Flammability **NFPA 701 & Cal. 117**
Colorfastness to Water Shade Change Class/e 5
Colorfastness to Light Class/e 6
Crocking Wet: Class/e & Dry: Class/e 5



Magical Sheers

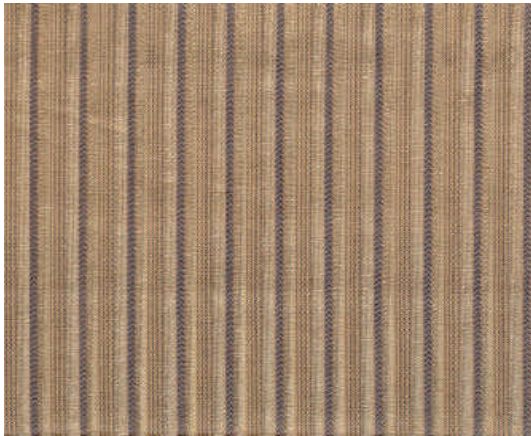
PATTERN MERCURY



Number of Cols.	7
Content	100% Polyester
Country of Origin	Belgium
Width	124" - 315 cm
Vertical	N/A
Horizontal	N/A
Railroaded	Yes
Weight (oz/ln yd)	1.15
Care Code	W (Washable) - P (Dry Clean)
Flammability	NFPA 701 & Cal. 117
Colorfastness to Water	Shade Change Class/e 5
Colorfastness to Light	Class/e 6
Crocking	Wet: Class/e & Dry: Class/e 5



PATTERN NORA

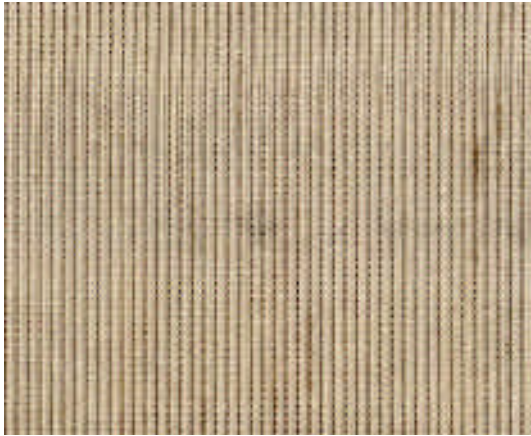


Number of Cols.	4
Content	100% Polyester
Country of Origin	Belgium
Width	124" - 315 cm
Vertical	0.39" (1 cm)
Horizontal	N/A
Railroaded	Yes
Weight (oz/ln yd)	2.74
Care Code	W (Washable) - P (Dry Clean)
Flammability	NFPA 701 & Cal. 117
Colorfastness to Water	Shade Change Class/e 5
Colorfastness to Light	Class/e 6
Crocking	Wet: Class/e & Dry: Class/e 5



Magical Sheers

PATTERN SPIRO



Number of Cols. 6
Content 100% Polyester
Country of Origin Belgium
Width 124" - 315 cm
Vertical N/A
Horizontal N/A
Railroaded Yes
Weight (oz/ln yd) 2.79
Care Code W (Washable) - P (Dry Clean)
Flammability **NFPA 701 & Cal. 117**
Colorfastness to Water Shade Change Class/e 5
Colorfastness to Light Class/e 6
Crocking Wet: Class/e & Dry: Class/e 5



PATTERN VENUS



Number of Cols. 3
Content 100% Polyester
Country of Origin Belgium
Width 124" - 315 cm
Vertical N/A
Horizontal N/A
Railroaded Yes
Weight (oz/ln yd) 3.01
Care Code W (Washable) - P (Dry Clean)
Flammability **NFPA 701 & Cal. 117**
Colorfastness to Water Shade Change Class/e 5
Colorfastness to Light Class/e 6
Crocking Wet: Class/e & Dry: Class/e 5

