



JOANNE / J.F. FABRICS

PRODUCT INFORMATION

Ryerson - J3891

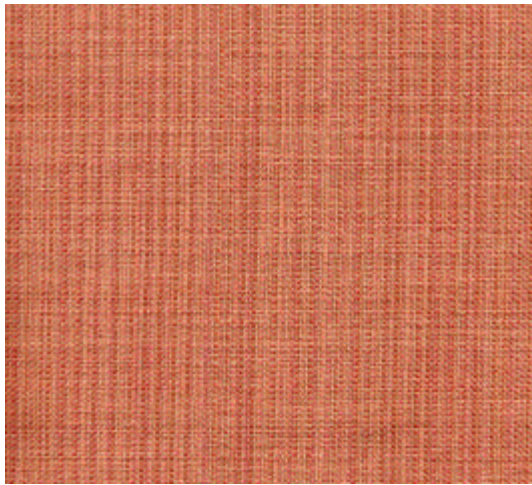
RYERSON

This exceptional collection of plain, chenille striped and plaid tweed fabrics are designed with durability in mind. Ryerson's menswear look addresses a growing trend in home decor. These patterns pass anywhere from 30,000 to 100,000 double rubs Wyzenbeek Cotton Duck, are railroaded and suitable for upholstery. Today textile designs are coming together in imaginative ways. Rich textured fabrics that just scream character.



RYERSON

PATTERN CARLTON



Number of Cols.	13
Content	55% Cotton, 45% Polyester
Country of Origin	USA
Width	54" - 137 cm
Vertical	N/A
Horizontal	N/A
Railroaded	Yes
Weight (oz/In yd)	14.6
Care Code	S
Flammability	UFAC Class 1 & Cal. 117
Surface Abrasion	100,000 DR Wyzenbeek Cotton Duck
Seam Slippage	Warp: 56 lbf, Filling: 85 lbf
Breaking Strength	Warp: 100 lbf, Filling: 59 lbf
Tear Strength	Warp: 11 lbf, Filling: 14 lbf
Colorfastness to Water	Shade Change: Class 4 - Staining: Class 3
Colorfastness to Solvent	Shade Change: Class 4 - Staining: Class 3
Colorfastness to Light	Class 4 (40 hours)
Croaking	Wet: Class 3 - Dry: Class 4
Pilling	Class 4

PATTERN COZY



Number of Cols.	9 (re-sampled)
Content	50% Polyester, 39% Rayon, 11% Olefin
Country of Origin	USA
Width	55" - 140 cm
Vertical	N/A
Horizontal	N/A
Railroaded	Yes
Weight (oz/In yd)	16
Care Code	S
Flammability	UFAC Class 1 & Cal. 117
Surface Abrasion	30,000 DR Wyzenbeek Cotton Duck
Seam Slippage	Warp: 44 lbf, Filling: 70 lbf
Breaking Strength	Warp: 100 lbf, Filling: 60 lbf
Tear Strength	Warp: 20 lbf, Filling: 9 lbf
Colorfastness to Water	Shade Change: Class 4 - Staining: Class 3
Colorfastness to Solvent	Shade Change: Class 4 - Staining: Class 3
Colorfastness to Light	Class 4 (40 hours)
Croaking	Wet: Class 3 - Dry: Class 4
Pilling	Class 5

PATTERN DANFORTH



Number of Cols.	6
Content	43% Polyester, 27% Rayon, 21% Cotton, 8% Acrylic, 1% Nylon
Country of Origin	USA
Width	54" - 137 cm
Vertical	14.75" (37.5 cm)
Horizontal	14.25" (36.2 cm)
Railroaded	Yes
Weight (oz/In yd)	15
Care Code	S
Flammability	UFAC Class 1 & Cal. 117
Surface Abrasion	36,000 DR Wyzenbeek Cotton Duck
Seam Slippage	Warp: 58 lbf, Filling: 92 lbf
Breaking Strength	Warp: 100 lbf, Filling: 68 lbf
Tear Strength	Warp: 24 lbf, Filling: 17 lbf
Colorfastness to Water	Shade Change: Class 4 - Staining: Class 3
Colorfastness to Solvent	Shade Change: Class 4 - Staining: Class 3
Colorfastness to Light	Class 4 (40 hours)
Croaking	Wet: Class 3 - Dry: Class 4
Pilling	Class 5

RYERSON

PATTERN GERRARD



Number of Cols.	8
Content	55% Cotton, 45% Polyester
Country of Origin	USA
Width	54" - 137 cm
Vertical	6.25" (21 cm)
Horizontal	N/A
Railroaded	Yes
Weight (oz/In yd)	14.6
Care Code	S
Flammability	UFAC Class 1 & Cal. 117
Surface Abrasion	60,000 DR Wyzenbeek Cotton Duck
Seam Slippage	Warp: 61 lbf, Filling: 85 lbf
Breaking Strength	Warp: 100 lbf, Filling: 74 lbf
Tear Strength	Warp: 24 lbf, Filling: 25 lbf
Colorfastness to Water	Shade Change: Class 4 - Staining: Class 3
Colorfastness to Solvent	Shade Change: Class 4 - Staining: Class 3
Colorfastness to Light	Class 4 (40 hours)
Crocking	Wet: Class 3 - Dry: Class 4
Pilling	Class 5

PATTERN LAKESHORE



Number of Cols.	8
Content	58% Cotton, 42% Polyester
Country of Origin	USA
Width	54" - 137 cm
Vertical	13" (33 cm)
Horizontal	3.75" (9.5 cm)
Railroaded	Yes
Weight (oz/In yd)	15.5
Care Code	S
Flammability	UFAC Class 1 & Cal. 117
Surface Abrasion	45,000 DR Wyzenbeek Cotton Duck
Seam Slippage	Warp: 64 lbf, Filling: 81 lbf
Breaking Strength	Warp: 100 lbf, Filling: 76 lbf
Tear Strength	Warp: 13 lbf, Filling: 17 lbf
Colorfastness to Water	Shade Change: Class 4 - Staining: Class 3
Colorfastness to Solvent	Shade Change: Class 4 - Staining: Class 3
Colorfastness to Light	Class 4 (40 hours)
Crocking	Wet: Class 3 - Dry: Class 4
Pilling	Class 5