

JOANNE FABRICS INC.

DESIGNER SERIES

Knightsbridge

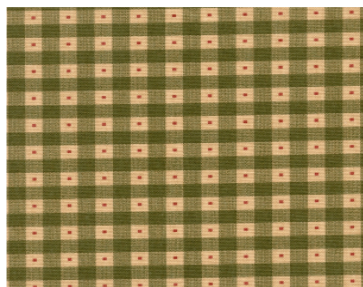
Exclusive to Joanne Fabrics in Canada

Available in Canada only

Knightsbridge is a versatile print collection of traditional floral bouquets and contemporary abstract designs, coordinated with vertical up the roll stripes, a small check and a rattan texture. All patterns are printed on a 100% Cotton heavy quality duck base cloth and are exclusive to Canada. All designs are 54" (137 cm) wide, pass 15,000 DR Wyzenbeek Cotton Duck and are suitable for drapery, bedding, upholstery and decorative accessories. This collection consists of 13 patterns; totaling 45 skus.



15075 – A rattan textured look design in warm earthy tones (sampled in five colorways). This pattern can stand-alone or can coordinate with the entire collection making this pattern very versatile.



15076 – A small-scale check design with a square dot in each of the check squares. The repeat of this design is 1" (2.5 cm) by 1" (2.5 cm). There are four colorways in this great little furniture or correlating design.



15077 – A striking vertical stripe sampled in two strong colorways that coordinate very well with most of the floral designs in this collection or can stand alone and can be used for drapery, bedding, upholstery, and decorative applications.



15078 – A multi-width vertical stripe available in four colorways. This pattern was a horizontal repeat of 6.75" (17.1 cm) and coordinates with most of the floral designs in this collection.



15079 – A classical rich colored large cameo design with a 25.25" (64.1 cm) vertical and 27" (69 cm) horizontal repeat. This design combines many sizes of acanthus leaves in four fashionable colorways.



15080 – A large traditional five-point floral bouquet design sampled in three colorways that coordinate very well with patterns 15076 and 15077. This design contains mostly cabbage roses in classic color combinations.



15081 – A medium scaled contemporary pattern consisting of textured squares randomly placed in a 25.25" (64.1 cm) vertical and a 27" (69 cm) horizontal repeat. This pattern is sampled in four colorways and coordinates best with pattern 15075 a rattan-look print.



15082 – A medium scaled botanical pattern combining many leaf and fern motifs on a geometrical background. Three soft natural toned colorways coordinate well with pattern 15075 a rattan-look print.



15083 – A tropical looking design with randomly placed leaves on a botanical shadowed background. This pattern is sampled in three nature inspired colorways and coordinates with patterns 15075, 15076, 15077 and 15078.

Knightsbridge Collection



15084 – A classic tropical design with an abundance of leaves placed randomly to portray a tropical forest look. Offered in a pastel colorway and a vibrant gem colorway this design can be used for drapery, bedding, upholstery or decorative accessories.



15085 – A large five-point floral bouquet design. This floral bouquet is framed by an acanthus leaf motif forming a huge cameo design. This pattern is offered in four colorways and coordinates well with patterns 15075, 15076, 15077, 15078.



15086 – A beautiful medium scaled floral bouquet motif offered in two warm toned colorways. This design has a 27" (69 cm) vertical and a 13.5" (34.3 cm) horizontal repeat with a dramatic colored flowers and a lighter colored plain background. This pattern coordinates well with patterns 15076 and 15077.



15087 – A stunning floral bouquet design offered in four fresh and vibrant colorways. This design has an 18" (45.7 cm) vertical and 27" (69 cm) horizontal repeat and coordinates well with patterns 15076, 15077 and 15078.